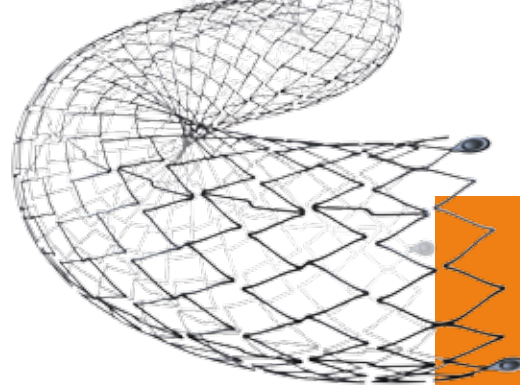


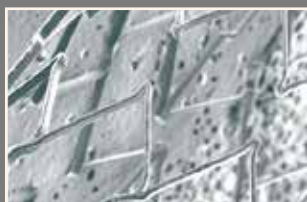
# Easy HiFlype

## NITINOL SELF EXPANDING STENT FOR ILIAC VESSELS

Easy HiFlype is a dedicated self expanding stent with hybrid cell design maximizing radial force and precision for iliac vessels.



- Proven bio and haemo-compatibility enabled by the Bio Inducer Surface coating, accelerating strut coverage, reducing thrombogenicity and sealing against heavy metal ions release



- Uniform radial force and excellent scaffolding with a unique hybridcell architecture



- Superior track and high precision upon stent release provided by a unique single-hand delivery system

### TECHNICAL DATA

PERIPHERAL STENT	
Stent diameters:	9 - 12 mm
Stent lengths:	20 - 100 mm
Stent material:	Nickel titanium alloy (nitinol)
Strut surface coating:	Bio Inducer Surface
6 tantalum radiopaque markers	
DEVICE SPECIFICATIONS	
Over The Wire (OTW)	
Introducer sheath compatibility:	6F
Guidewire compatibility:	0.035"
Usable Catheter Length - UCL:	85 & 135 cm

# Easy HiFlype

NITINOL SELF EXPANDING STENT FOR ILIAC VESSELS

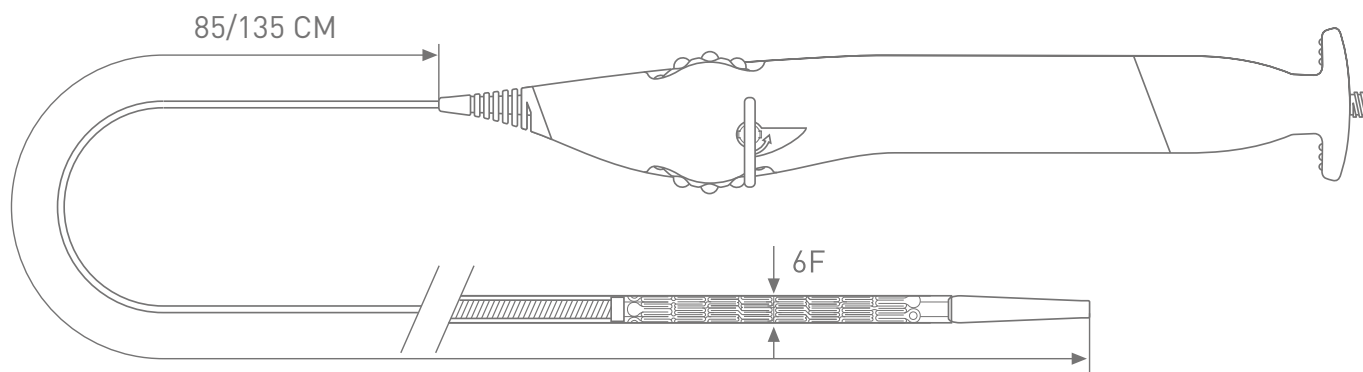
## ORDER INFORMATION EASY HIFLYPE

### USABLE CATHETER LENGTH 85 CM

∅ (mm) \ L (mm)	20	40	60	80	100
9.00	ICEF9020S	ICEF9040S	ICEF9060S	ICEF9080S	ICEF90100S
10.00	ICEF10020S	ICEF10040S	ICEF10060S	ICEF10080S	ICEF100100S
12.00		ICEF12040S	ICEF12060S	ICEF12080S	ICEF120100S

### USABLE CATHETER LENGTH 135 CM

∅ (mm) \ L (mm)	20	40	60	80	100
9.00	ICEF9020L	ICEF9040L	ICEF9060L	ICEF9080L	ICEF90100L
10.00	ICEF10020L	ICEF10040L	ICEF10060L	ICEF10080L	ICEF100100L
12.00		ICEF12040L	ICEF12060L	ICEF12080L	ICEF120100L



[www.alvimedica.com](http://www.alvimedica.com)

Please contact your local sales representative for product availability.

Not for sale in the USA and Japan.

The images shown within this document are of a purely illustrative nature and are not intended to depict reality.

Please consult product labels and package inserts for indications, contraindications, hazards, warnings, cautions and instruction for use.

Manufactured by: CID S.p.a., Strada per Crescentino, sn - 13040 Saluggia (VC) Italy

©2014, Alvimedica. All Rights Reserved.



back to life!