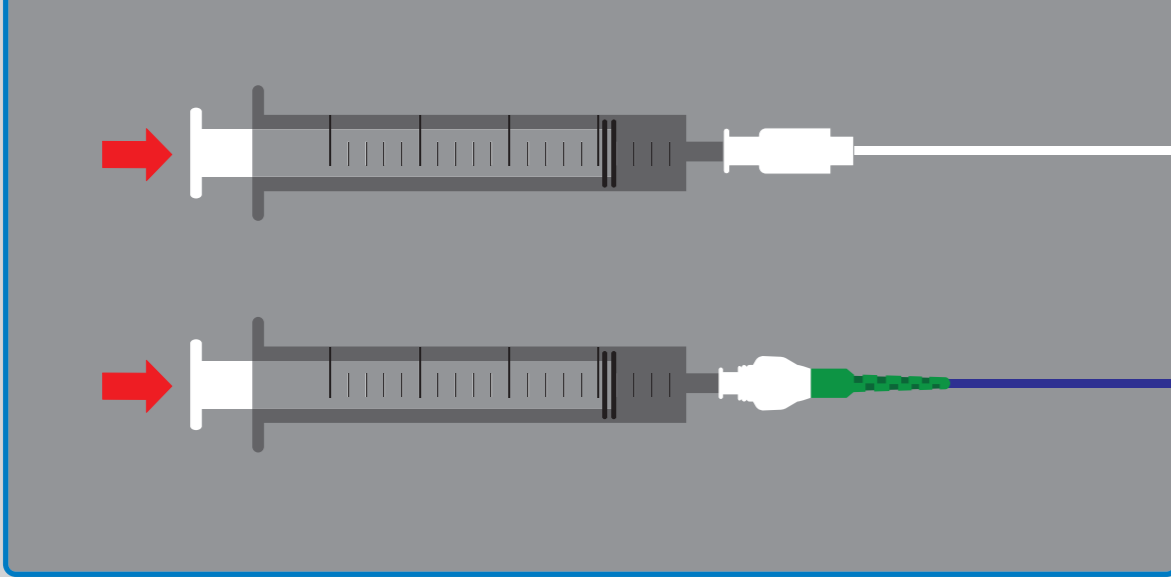


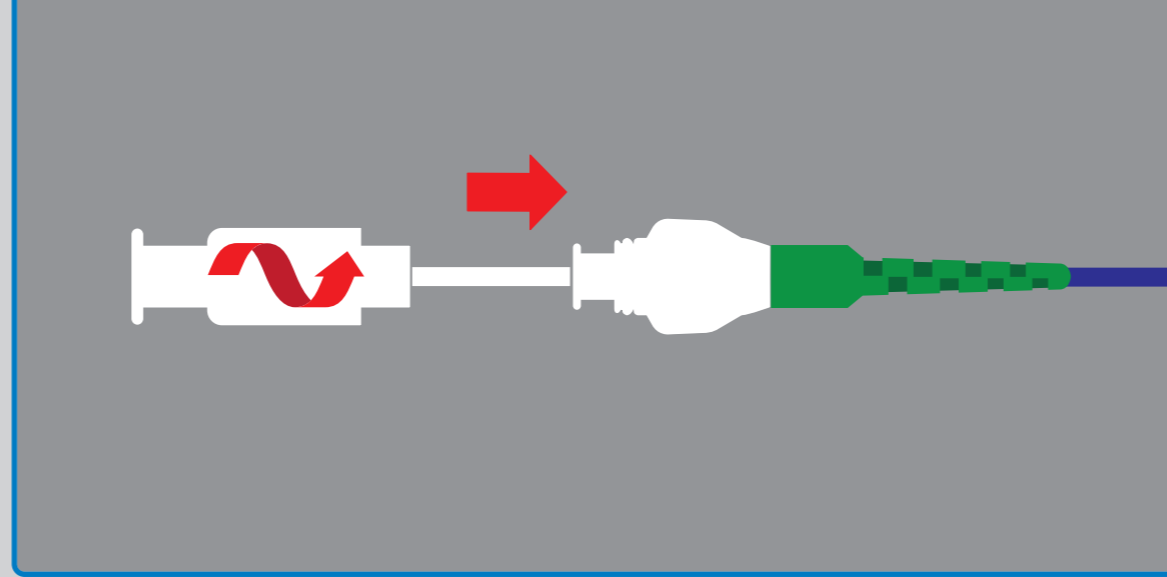
Introducing

1. Flush



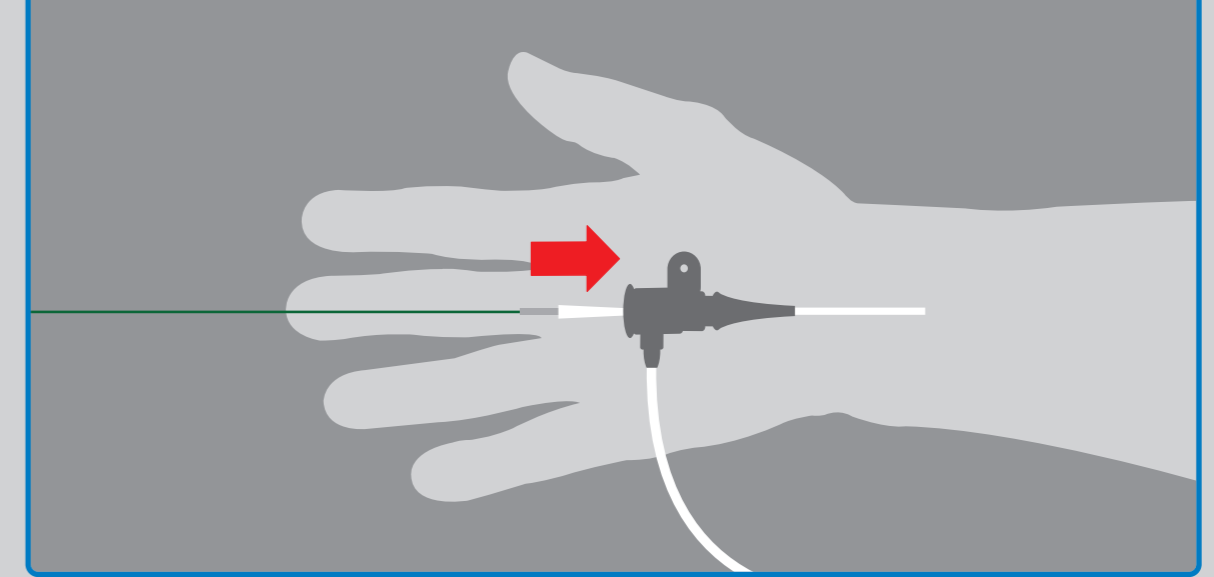
Flush dilator and catheter with saline.

2. Dock



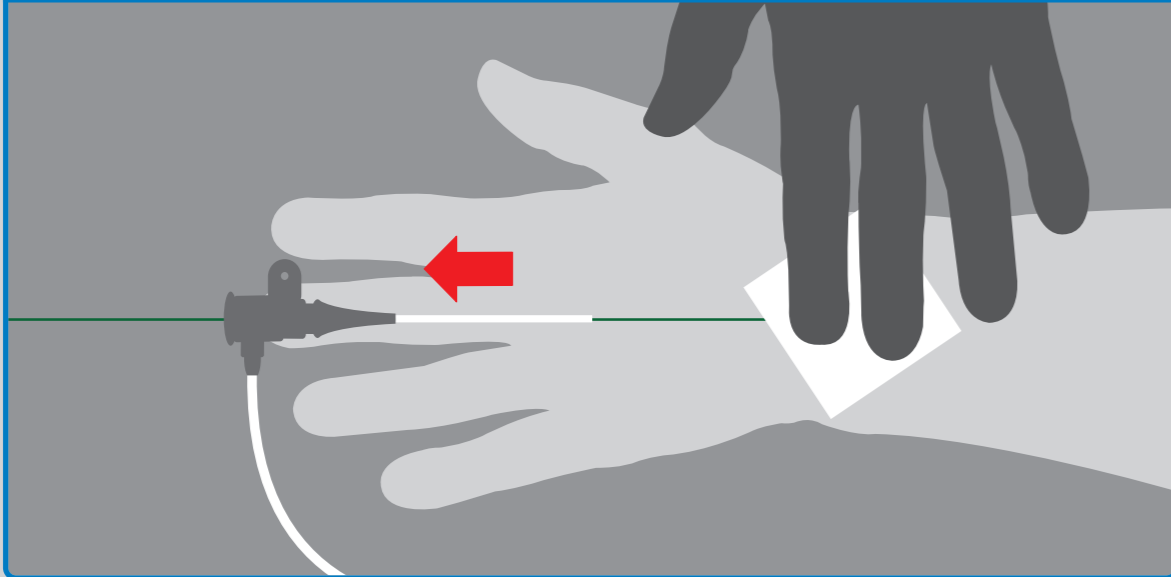
Dock dilator with SheathLess Eaucath guide catheter (one clockwise turn).

3. Introduce Wire



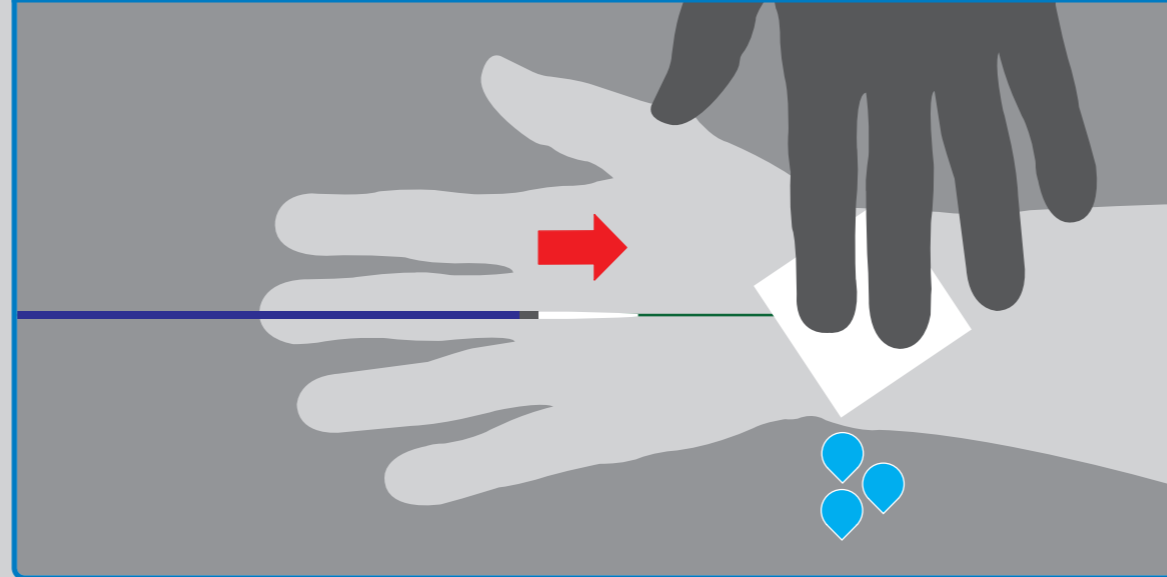
Introduce .035" guidewire into radial artery through sheath.

4. Remove Sheath



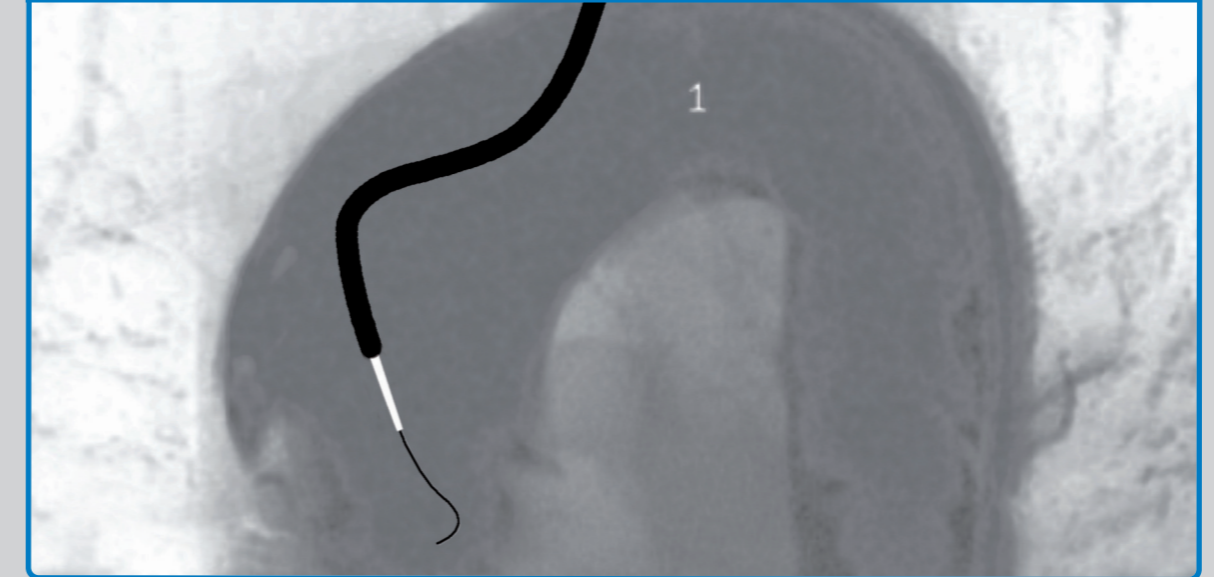
Remove Sheath and apply pressure to puncture site.

5. Introduce & Wet Gauze



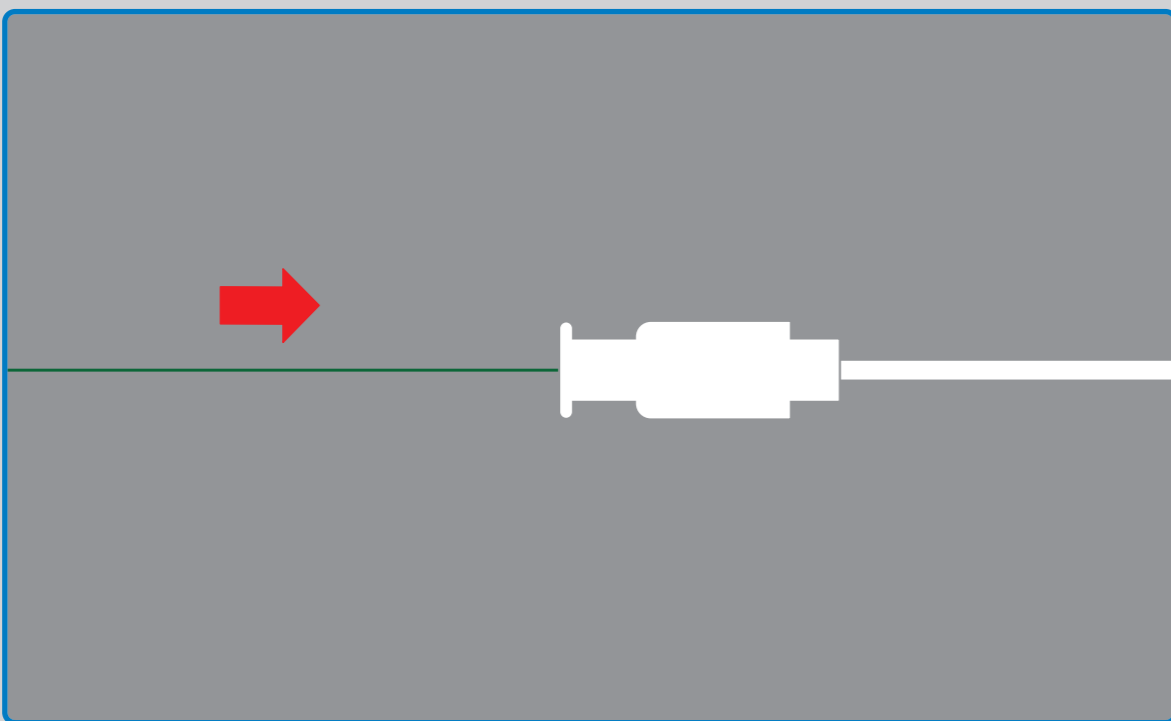
Wet gauze (to activate Hydrophilic coating) and introduce dilator over wire. Screen when inserting SheathLess Eaucath guide catheter.

6. Ascending Aorta Undock

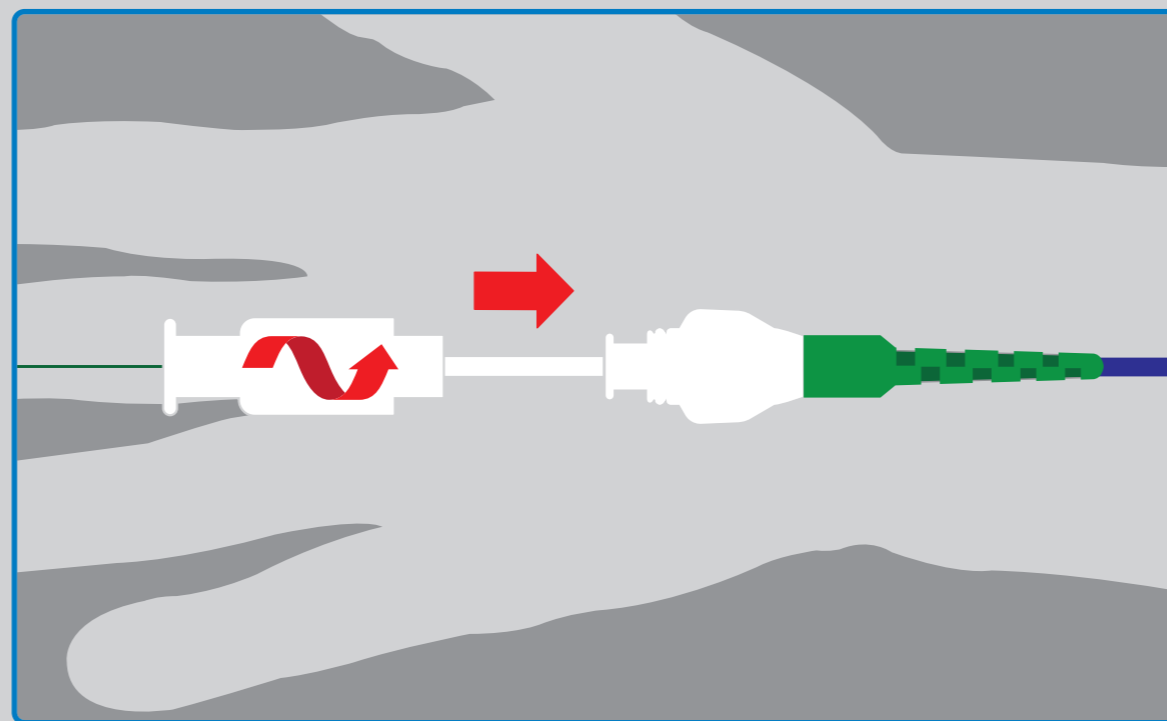


Make sure .035" wire is advanced 5 cm distal to the dilator at all times. When the dilator and catheter have reached the ascending aorta, remove dilator. **IMPORTANT:** All SheathLess Eaucath guide catheters have I-to-I torque and should be handled with care.

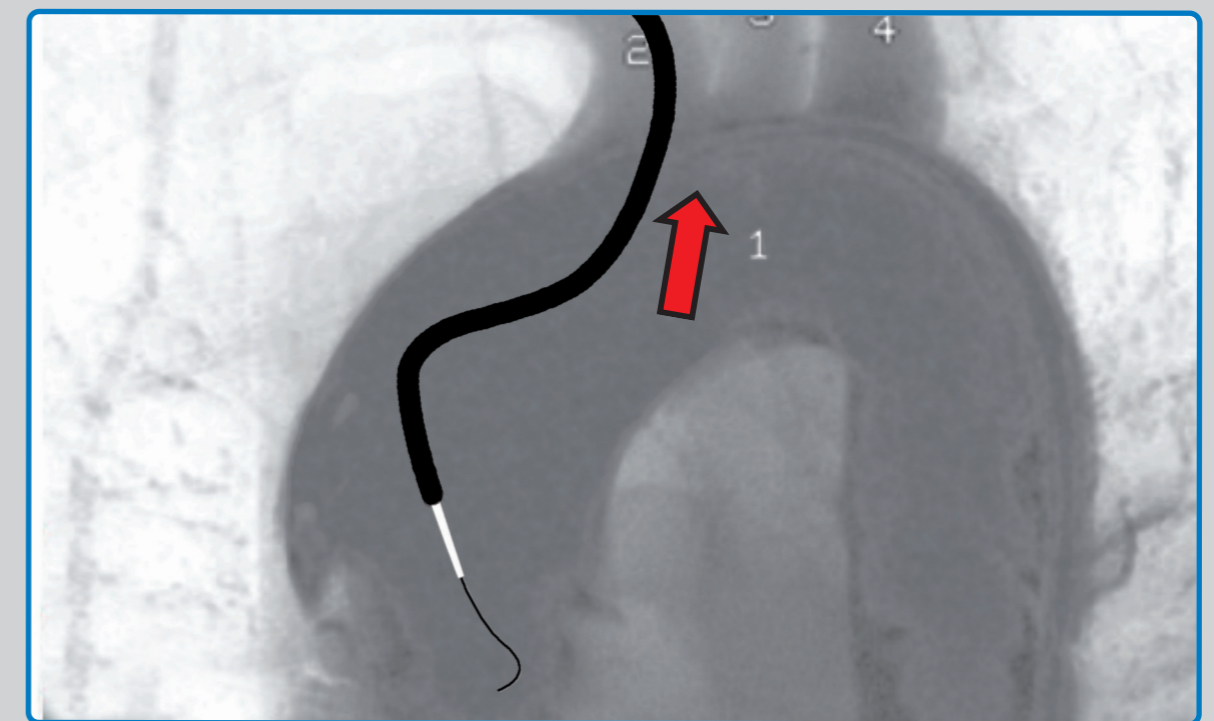
Removing



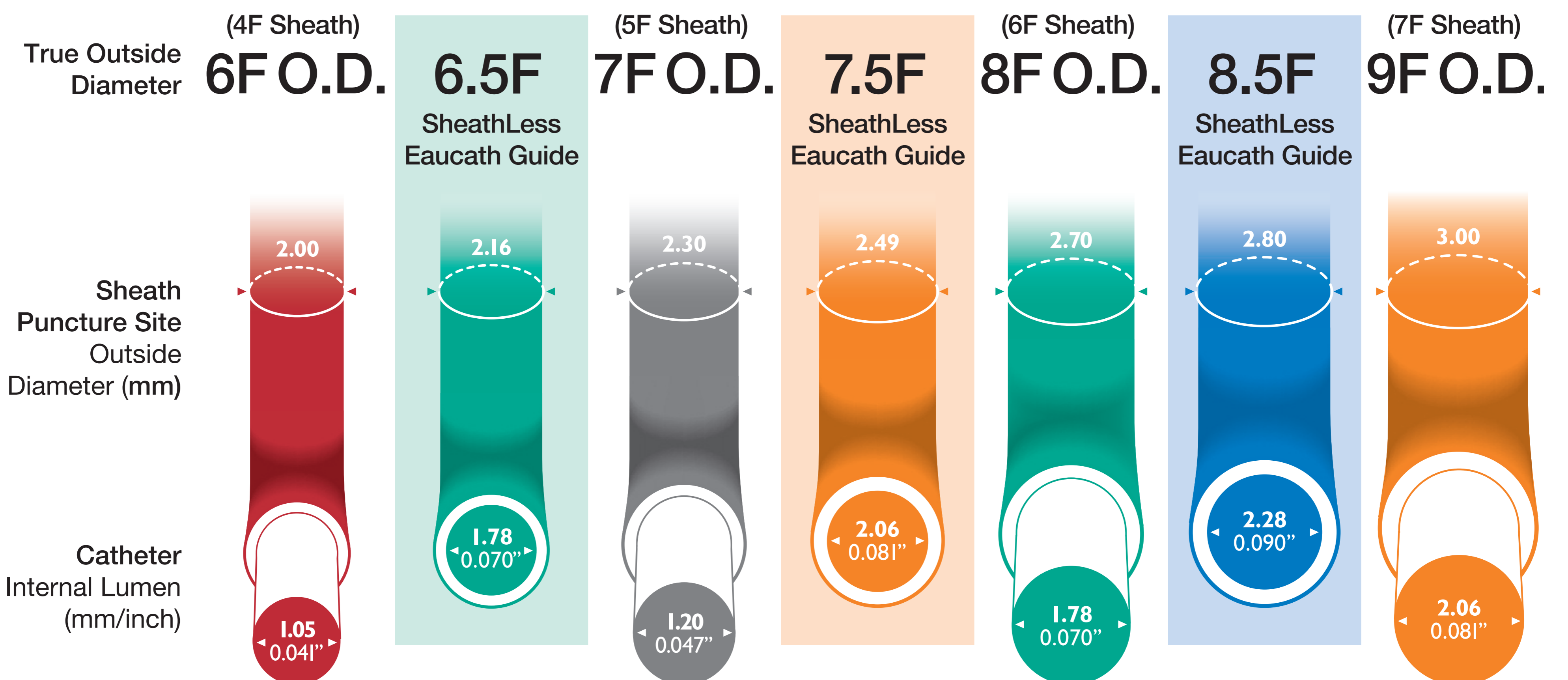
1. Flush dilator. Reintroduce .035" wire into dilator.



2. Introduce dilator & .035" wire into the SheathLess Eaucath guide catheter. Ensure .035" wire is 5 cm ahead of dilator at all times & screen



3. Disengage SheathLess Eaucath guide catheter from the ostium. When wire and dilator reach the aortic arch, lock the dilator into catheter and withdraw slowly whilst screening.



CAUTION Do not use 6.5F guide catheter following use of a 6F sheath – (OD 8F)