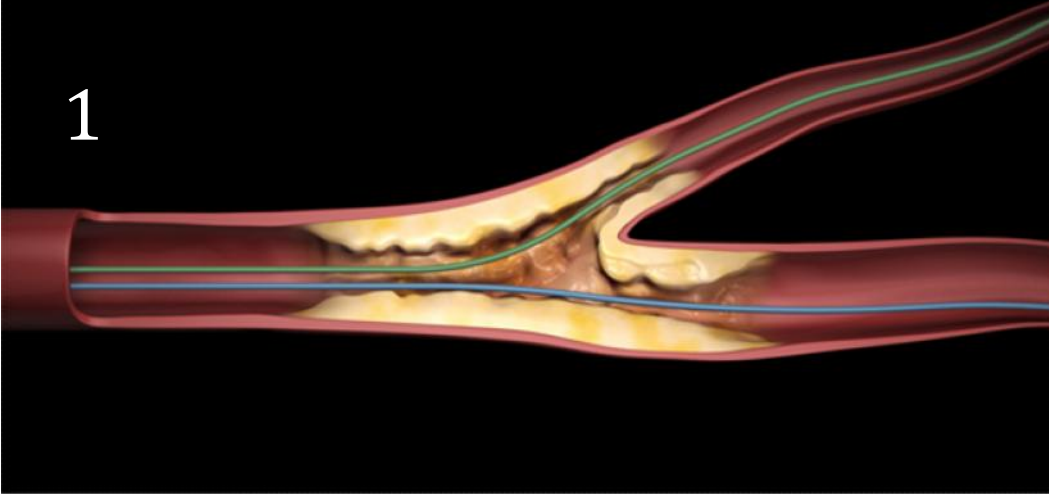


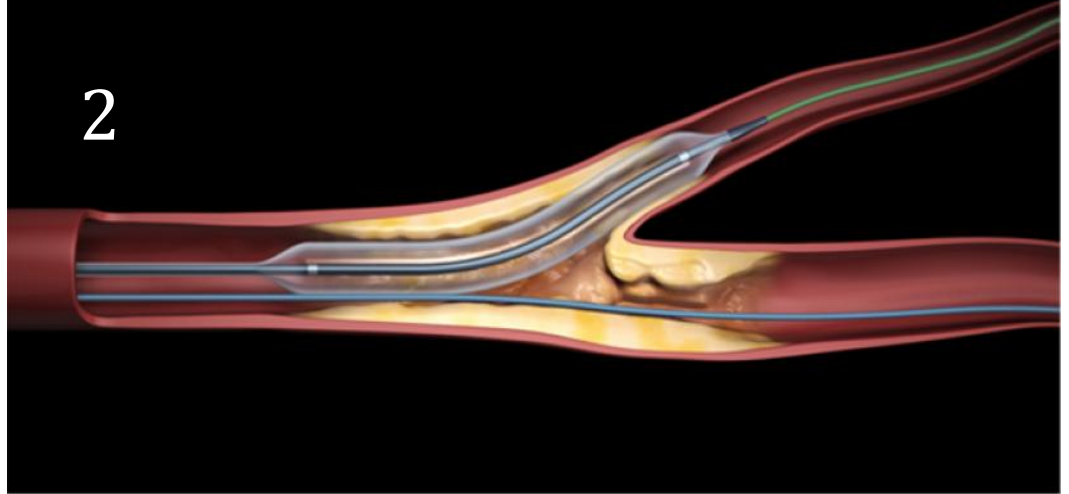
Step 1: Wire both main vessel and side branch.

1



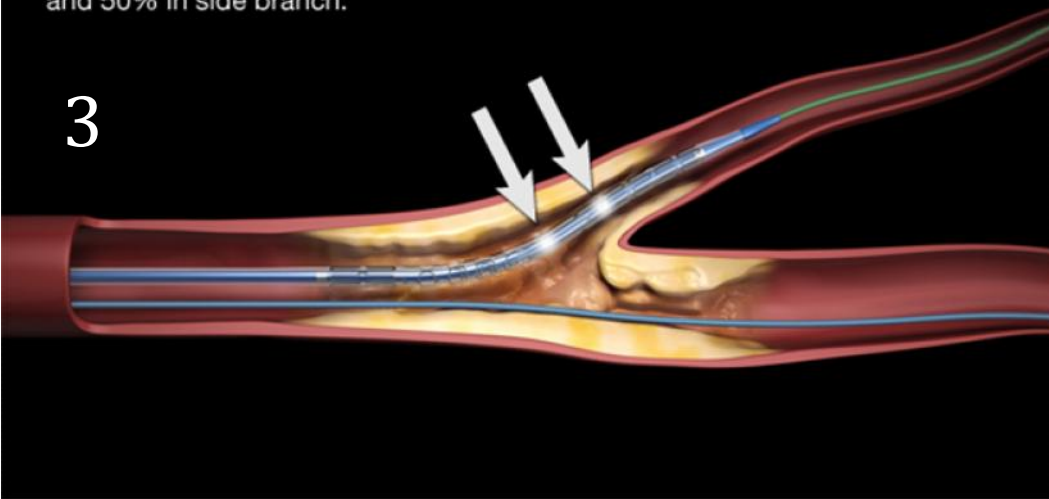
Step 2: Pre-dilate and prepare side branch lesion.

2



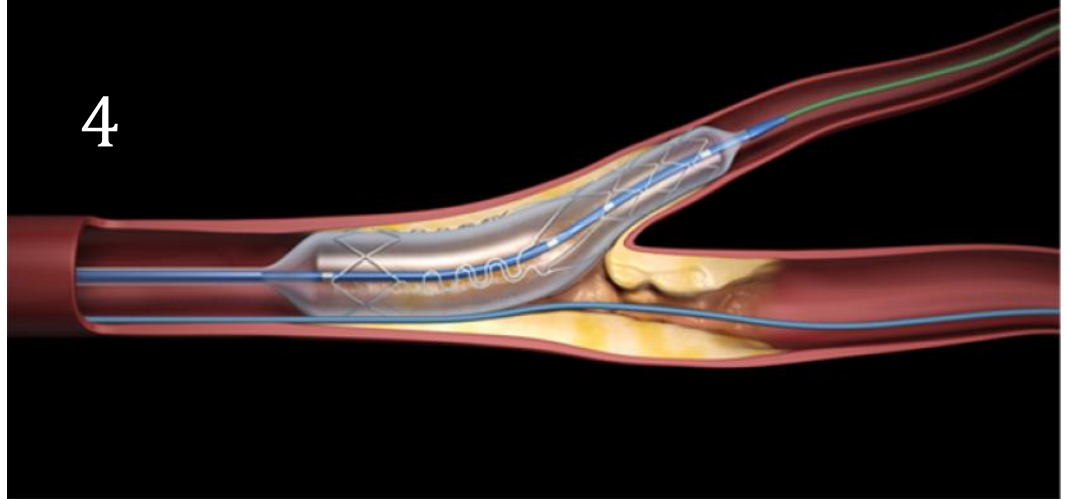
Step 3: Position Tryton side branch stent 50% in main vessel and 50% in side branch.

3



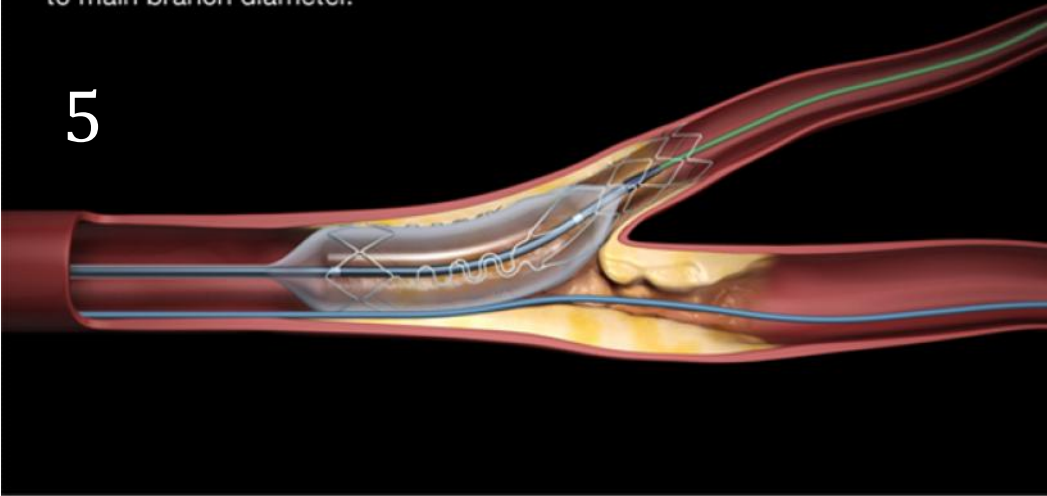
Step 4: Deploy Tryton side branch stent.

4



Step 5: Post-dilate Tryton proximal section with balloon sized to main branch diameter.

5



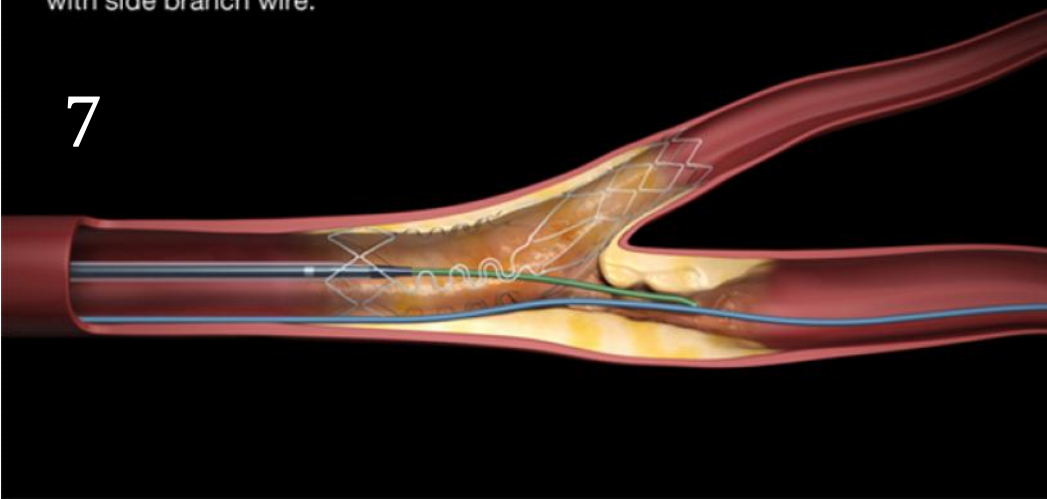
Step 6: The Tryton side branch is deployed, the side branch is **protected and secured**.

6



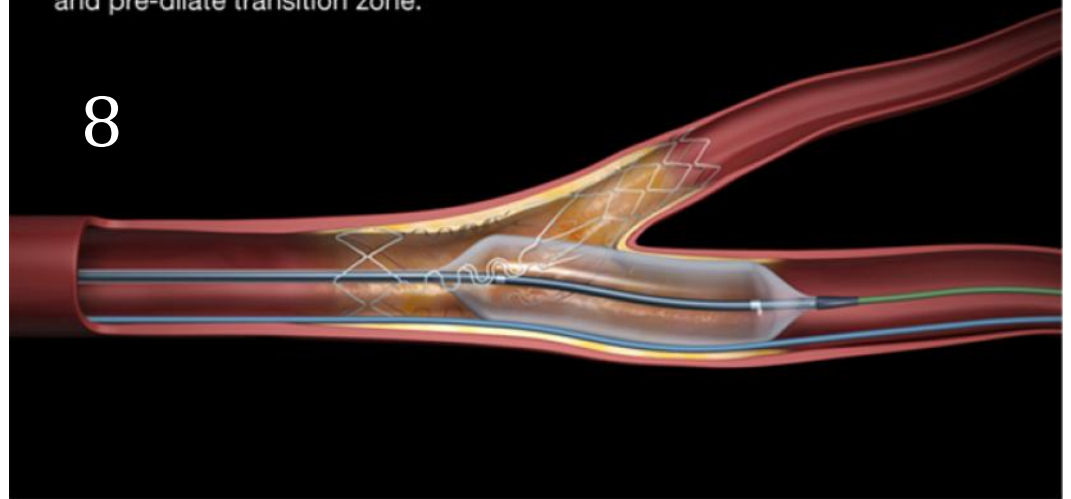
Step 7: "Park" balloon with Tryton stent and wire main branch with side branch wire.

7



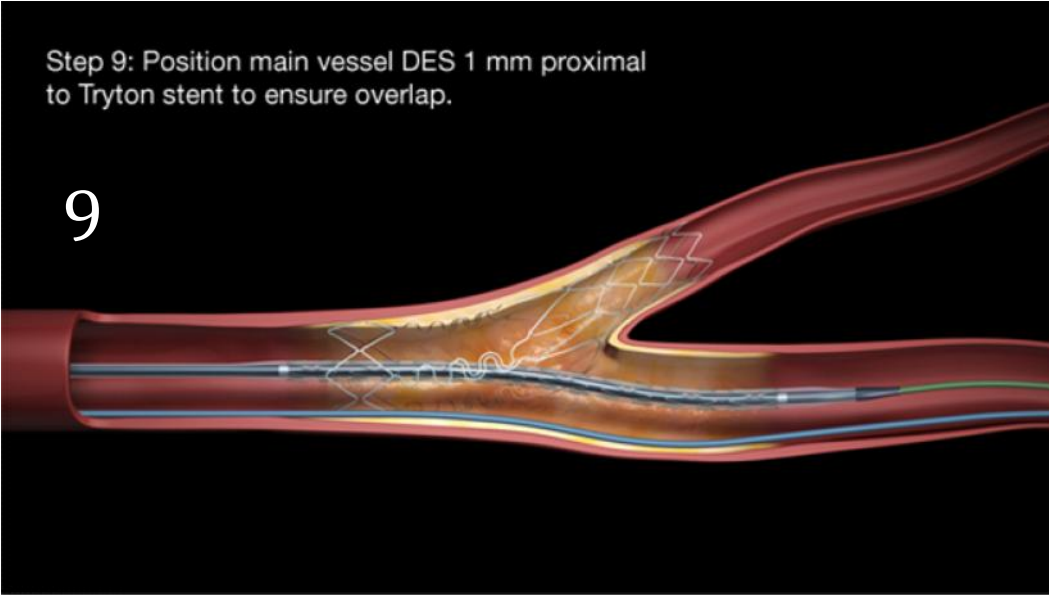
Step 8: Check with "parked" balloon for easy passage and pre-dilate transition zone.

8



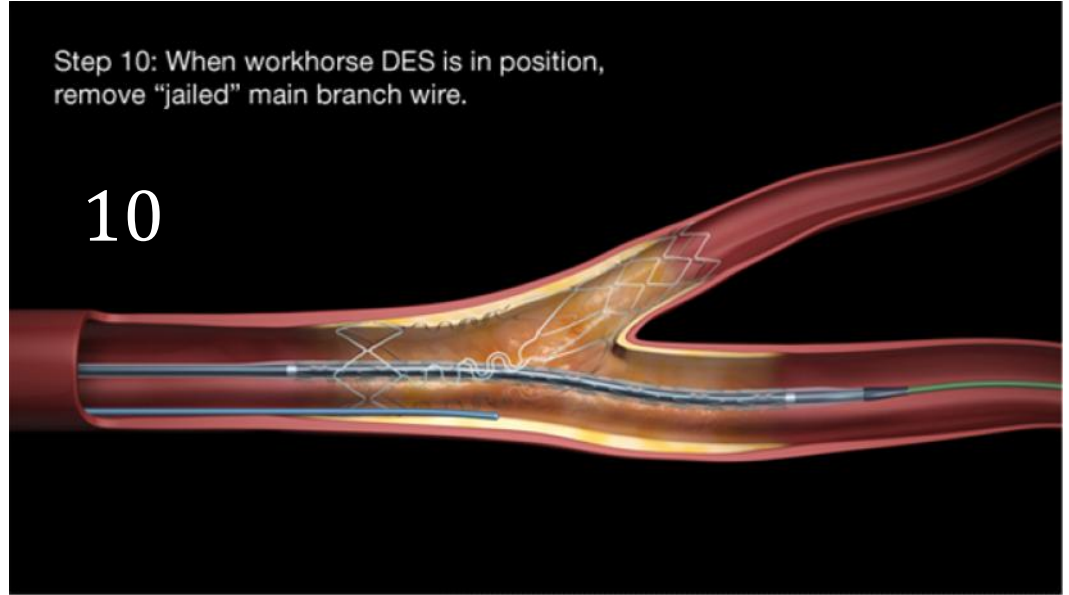
Step 9: Position main vessel DES 1 mm proximal to Tryton stent to ensure overlap.

9



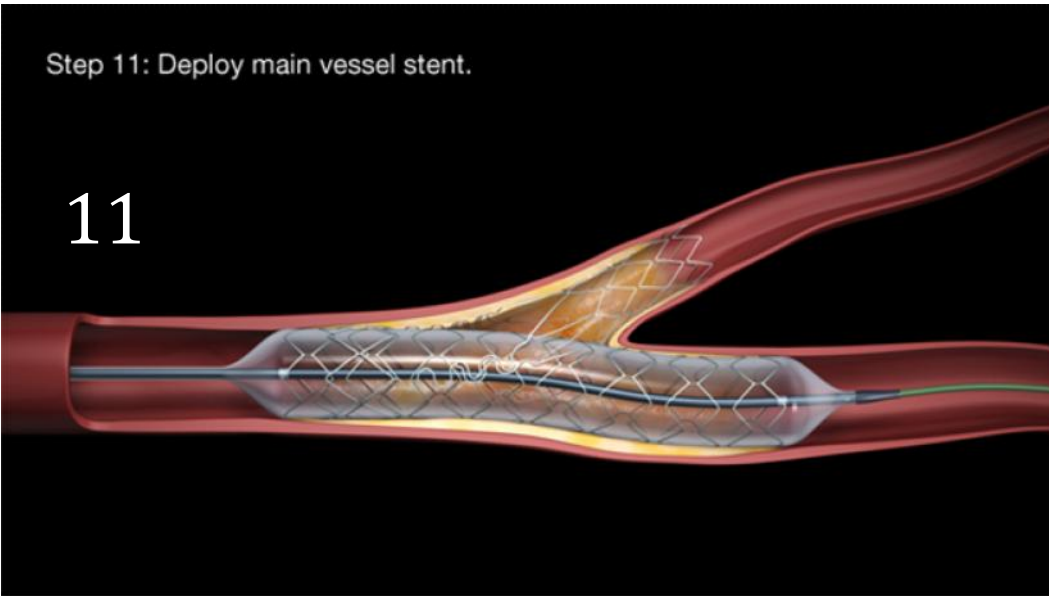
Step 10: When workhorse DES is in position, remove "jailed" main branch wire.

10



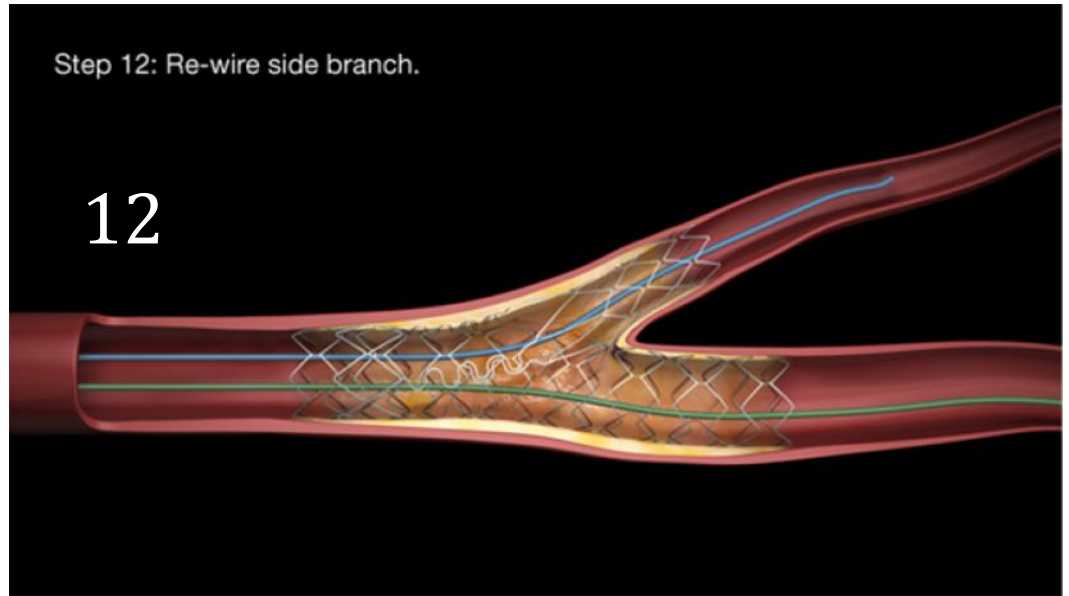
Step 11: Deploy main vessel stent.

11



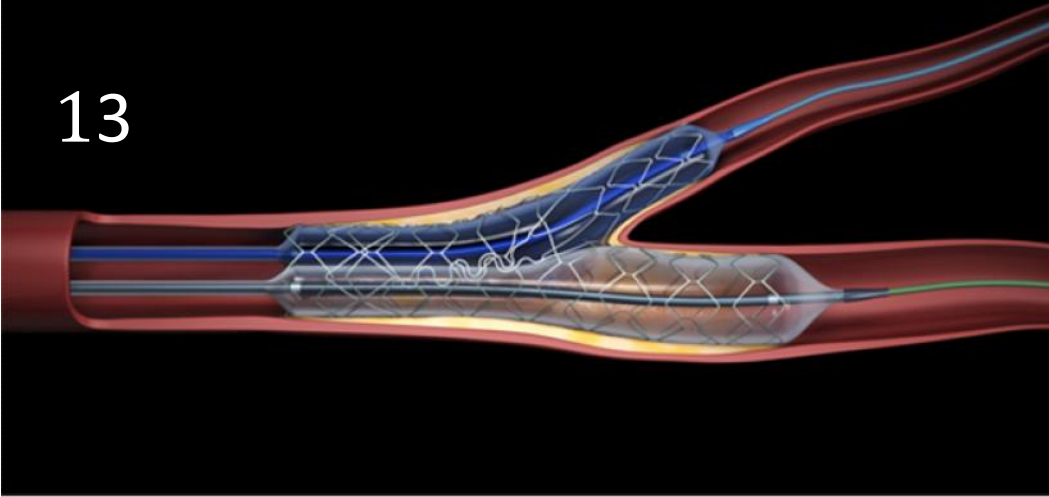
Step 12: Re-wire side branch.

12



Step 13: Perform simultaneous kissing balloon post dilation.

13



Step 14: Procedure is complete: the main branch and side branch are protected and secured.

14

