

ASAHI Corsair Pro XS

Simplify Retrograde Complexity

The new SHINKA-Shaft increases device performance
by maintaining flexibility and durability



| Catalogue No. | Outer Diameter | | | Inner Diameter | | Usable Length | Recommended GW |
|---------------|----------------|----------------|----------------|---------------------|---------------------|---------------|---------------------|
| | Tip | Distal Shaft | Proximal Shaft | Tip | Shaft | | |
| CSR135-21S | 0.44mm (1.3Fr) | 0.71mm (2.1Fr) | 0.95mm (2.9Fr) | 0.38mm (0.015 inch) | 0.48mm (0.019 inch) | 135cm | 0.36mm (0.014 inch) |
| CSR150-21S | 0.44mm (1.3Fr) | 0.71mm (2.1Fr) | 0.95mm (2.9Fr) | 0.38mm (0.015 inch) | 0.48mm (0.019 inch) | 150cm | 0.36mm (0.014 inch) |



© 2020 ASAHI INTECC CO., LTD
"ASAHI" and "Corsair Pro" are trademarks or registered trademarks of ASAHI INTECC CO., LTD. in Japan and other countries.

Manufactured by:



ASAHI INTECC CO.,LTD.

3-100 Akatsuki-cho, Seto, Aichi 489-0071 Japan
TEL:+81-561-48-5551 FAX:+81-561-48-5552
www.asahi-intecc.com

Distributed by:

K20231_B_LC_1.0

ASAHI
Corsair Pro XS
Microcatheter



ASAHI Corsair Pro XS

Simplify Retrograde Complexity

LOW

Tip Profile

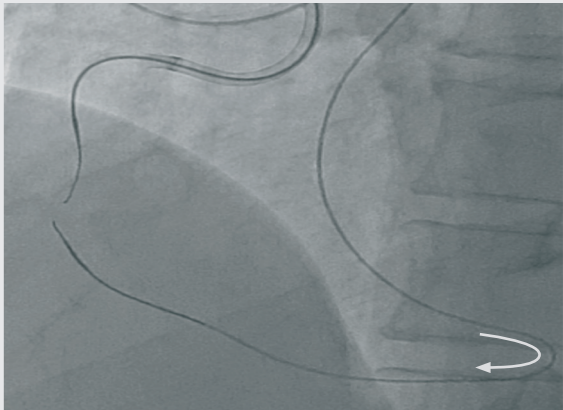
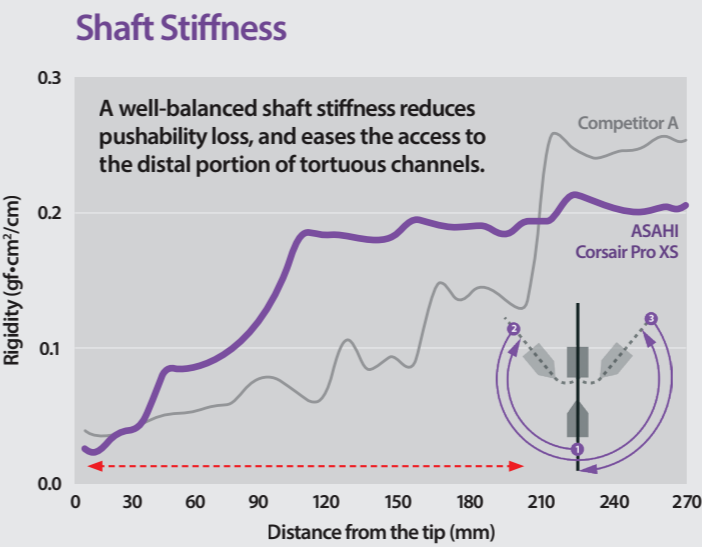
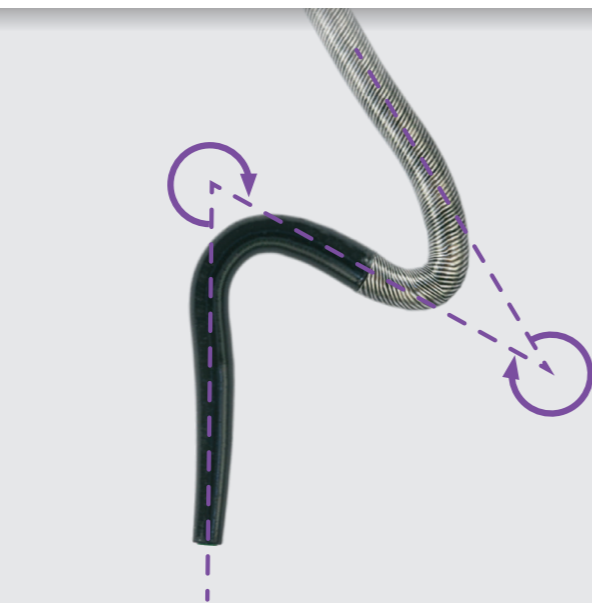
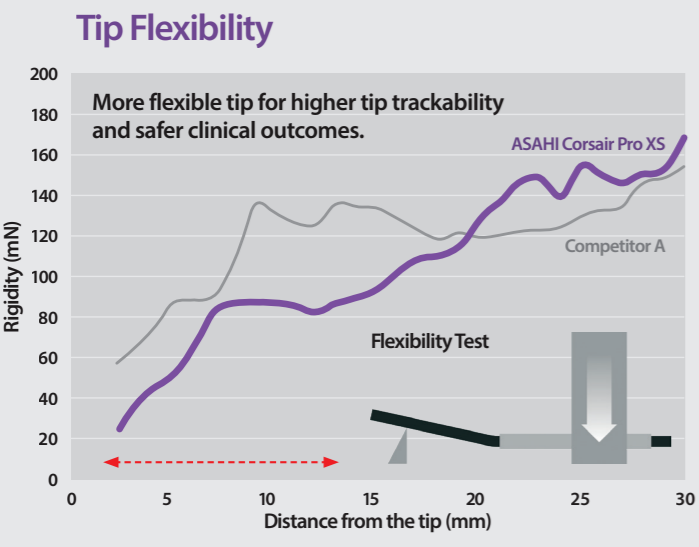
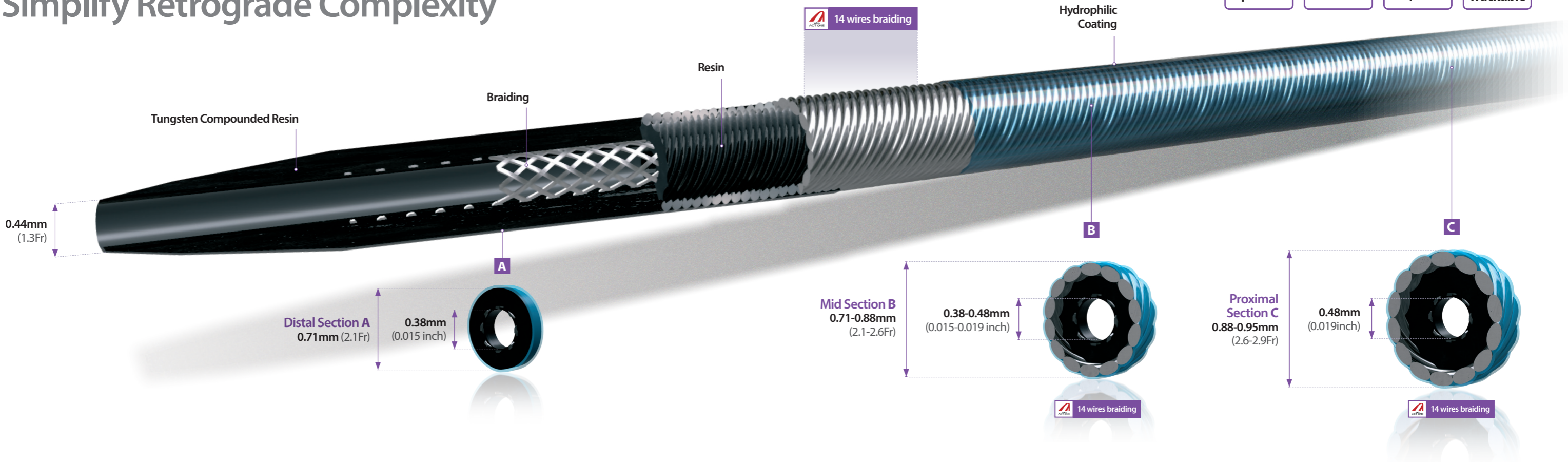
2.1 Fr

Microcatheter

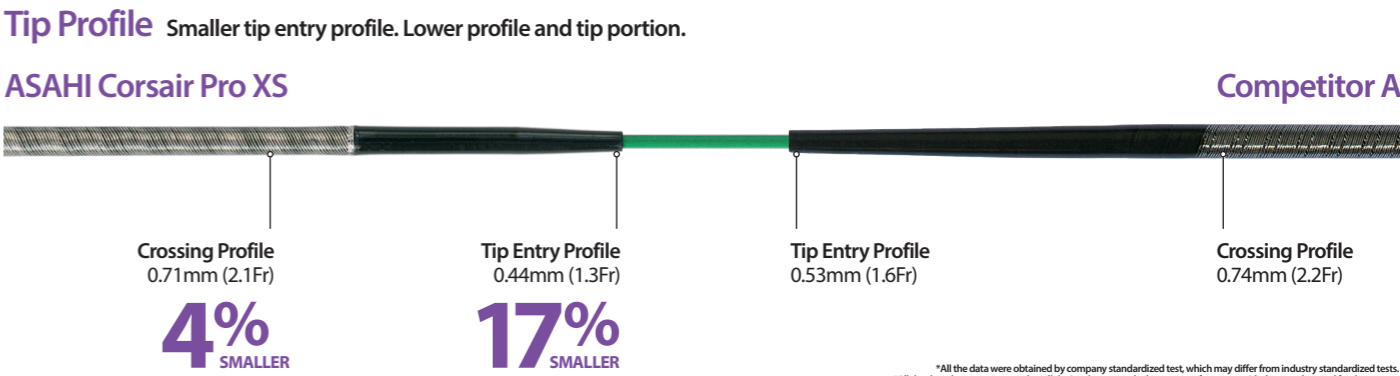
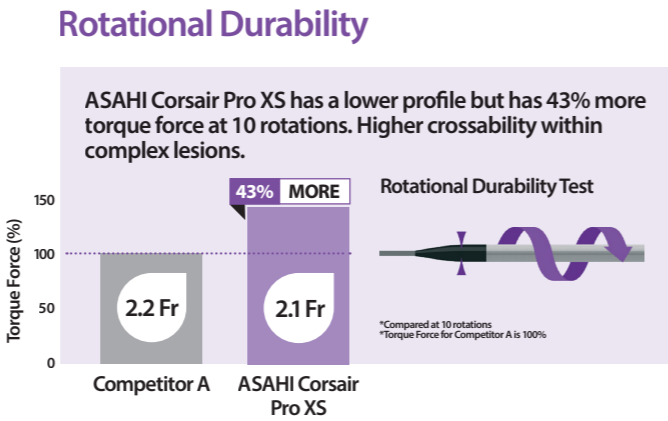
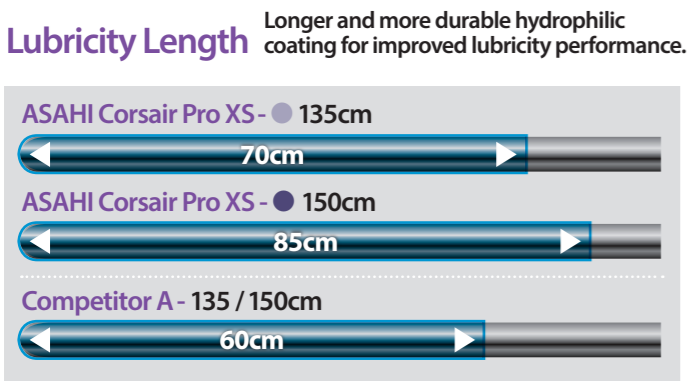
10

Torqueable

Flexible & Trackable



ASAHI Corsair Pro XS during retrograde procedure



*All the data were obtained by company standardized test, which may differ from industry standardized tests. *All the data do not guarantee that all devices have exactly the same performance with the samples used for these tests.