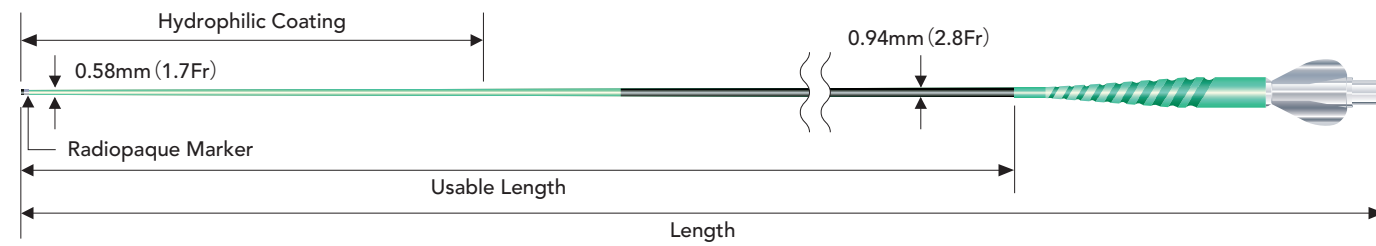


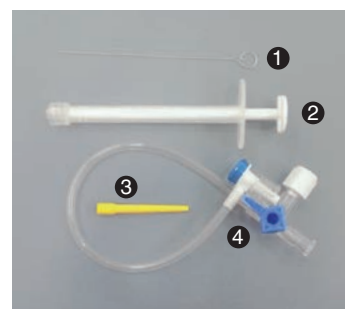
Structure and Ordering Information



Max pressure is measured when the tip of catheter is fully open.

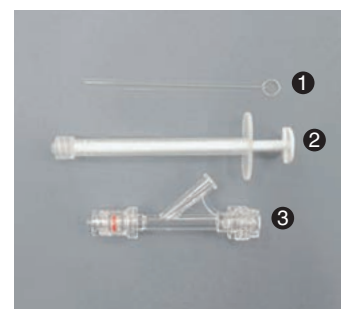
| Product | Catalog No. | Usable Length | Length | O.D. of Distal Shaft / O.D. of Proximal Shaft | I.D. of Distal Shaft / I.D. of Proximal Shaft | Max. Guide Wire | Hydrophilic Coating Length | Tip Shape | Max. Pressure |
|---------------|-------------|---------------|--------|---|---|----------------------|----------------------------|-----------|---------------------|
| ASAHI Veloute | VEL105-16S | 105 cm | 112 cm | 0.58 / 0.94 mm (1.7 / 2.8 Fr) | 0.43 / 0.59 mm (0.017 / 0.023 inch) | 0.41 mm (0.016 inch) | 65 cm | Straight | 6895 kPa (1000 psi) |
| | VEL105-16AS | 105 cm | 112 cm | 0.58 / 0.94 mm (1.7 / 2.8 Fr) | 0.43 / 0.59 mm (0.017 / 0.023 inch) | 0.41 mm (0.016 inch) | 65 cm | Angle | 6895 kPa (1000 psi) |
| | VEL125-16S | 125 cm | 132 cm | 0.58 / 0.94 mm (1.7 / 2.8 Fr) | 0.43 / 0.59 mm (0.017 / 0.023 inch) | 0.41 mm (0.016 inch) | 65 cm | Straight | 6895 kPa (1000 psi) |
| | VEL125-16AS | 125 cm | 132 cm | 0.58 / 0.94 mm (1.7 / 2.8 Fr) | 0.43 / 0.59 mm (0.017 / 0.023 inch) | 0.41 mm (0.016 inch) | 65 cm | Angle | 6895 kPa (1000 psi) |
| | VEL150-16S | 150 cm | 157 cm | 0.58 / 0.94 mm (1.7 / 2.8 Fr) | 0.43 / 0.59 mm (0.017 / 0.023 inch) | 0.41 mm (0.016 inch) | 100 cm | Straight | 6895 kPa (1000 psi) |
| | VEL150-16AS | 150 cm | 157 cm | 0.58 / 0.94 mm (1.7 / 2.8 Fr) | 0.43 / 0.59 mm (0.017 / 0.023 inch) | 0.41 mm (0.016 inch) | 100 cm | Angle | 6895 kPa (1000 psi) |
| | VEL105-16Y | 105 cm | 112 cm | 0.58 / 0.94 mm (1.7 / 2.8 Fr) | 0.43 / 0.59 mm (0.017 / 0.023 inch) | 0.41 mm (0.016 inch) | 65 cm | Straight | 6895 kPa (1000 psi) |
| | VEL105-16AY | 105 cm | 112 cm | 0.58 / 0.94 mm (1.7 / 2.8 Fr) | 0.43 / 0.59 mm (0.017 / 0.023 inch) | 0.41 mm (0.016 inch) | 65 cm | Angle | 6895 kPa (1000 psi) |
| | VEL125-16Y | 125 cm | 132 cm | 0.58 / 0.94 mm (1.7 / 2.8 Fr) | 0.43 / 0.59 mm (0.017 / 0.023 inch) | 0.41 mm (0.016 inch) | 65 cm | Straight | 6895 kPa (1000 psi) |
| | VEL125-16AY | 125 cm | 132 cm | 0.58 / 0.94 mm (1.7 / 2.8 Fr) | 0.43 / 0.59 mm (0.017 / 0.023 inch) | 0.41 mm (0.016 inch) | 65 cm | Angle | 6895 kPa (1000 psi) |
| | VEL150-16Y | 150 cm | 157 cm | 0.58 / 0.94 mm (1.7 / 2.8 Fr) | 0.43 / 0.59 mm (0.017 / 0.023 inch) | 0.41 mm (0.016 inch) | 100 cm | Straight | 6895 kPa (1000 psi) |
| | VEL150-16AY | 150 cm | 157 cm | 0.58 / 0.94 mm (1.7 / 2.8 Fr) | 0.43 / 0.59 mm (0.017 / 0.023 inch) | 0.41 mm (0.016 inch) | 100 cm | Angle | 6895 kPa (1000 psi) |

■ Accessory



VEL105-16S / VEL105-16AS
VEL125-16S / VEL125-16AS
VEL150-16S / VEL150-16AS

1. Stylet
2. 1cc Syringe
3. Straightener
4. Hemostasis Valve



VEL105-16Y / VEL105-16AY
VEL125-16Y / VEL125-16AY
VEL150-16Y / VEL150-16AY

1. Stylet
2. 1cc Syringe
3. Y Connector



© 2020 ASAHI INTECC CO., LTD.
ASAHI, "Veloute" and "ASAHI Meister" are trademarks or registered trademarks of ASAHI INTECC CO., LTD. in Japan and other countries.

Manufactured by:

ASAHI INTECC

ASAHI INTECC CO., LTD.

3-100 Akatsuki-cho, Seto, Aichi 489-0071 Japan
TEL: +81-561-48-5551 FAX: +81-561-48-5552
www.asahi-intecc.com

Distributed by:

ASAHI Veloute

Microcatheter

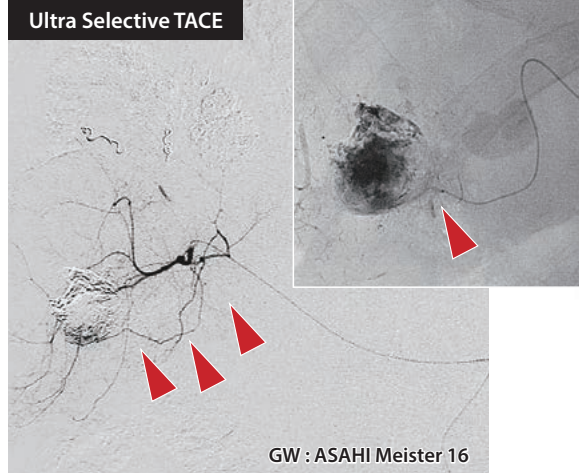
Your dreams. Woven together.
ASAHI INTECC

More selective, more effective

ASAHI Veloute Microcatheter

Characteristics

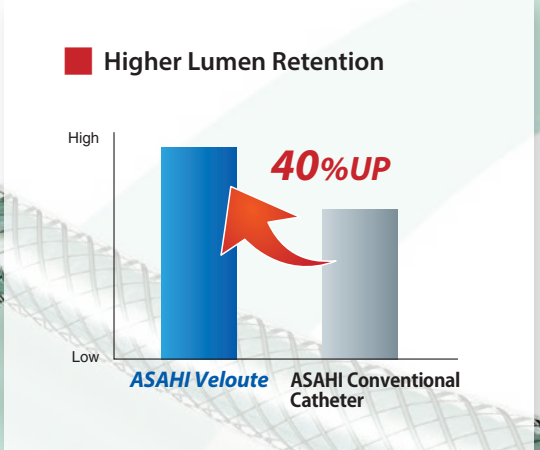
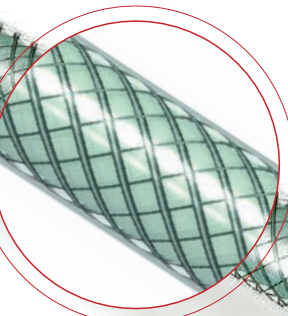
- High guide wire trackability and vessel selectivity — developed to be compatible with ASAHI Meister 16
- Soft tip
- Smooth taper
- Tip outer diameter 0.58mm(1.7Fr)
- 0.41mm(0.016inch) guide wire compatible
- Reduced clearance between microcatheter and guide wire



Provided by : Shiro Miyayama, M.D, Fukuiken Saiseikai Hospital

Shaft

- High Maneuverability — Proprietary composite braiding (2 wires with different thickness)
- Resistance to kinking
- Resistance to stretching
- High visibility

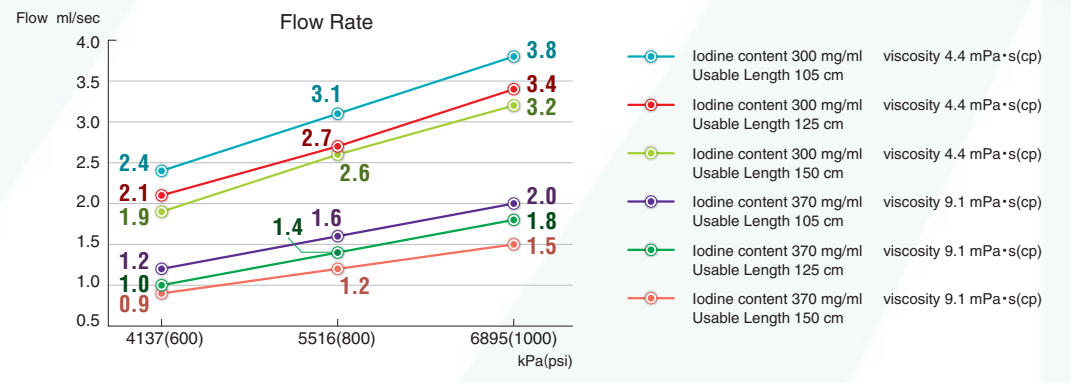


All the data were obtained by company standardized test, which may differ from industry standardized tests. All the data do not guarantee that all devices have exactly the same performance with the samples used for tests.

Flow Rate Test

Better Tactile Feedback

The gradual taper design allows higher tactile feedback and easy manual contrast injection keeping a smooth flow



All the data were obtained by company standardized test, which may differ from industry standardized tests. All the data do not guarantee that all devices have exactly the same performance with the samples used for tests.